

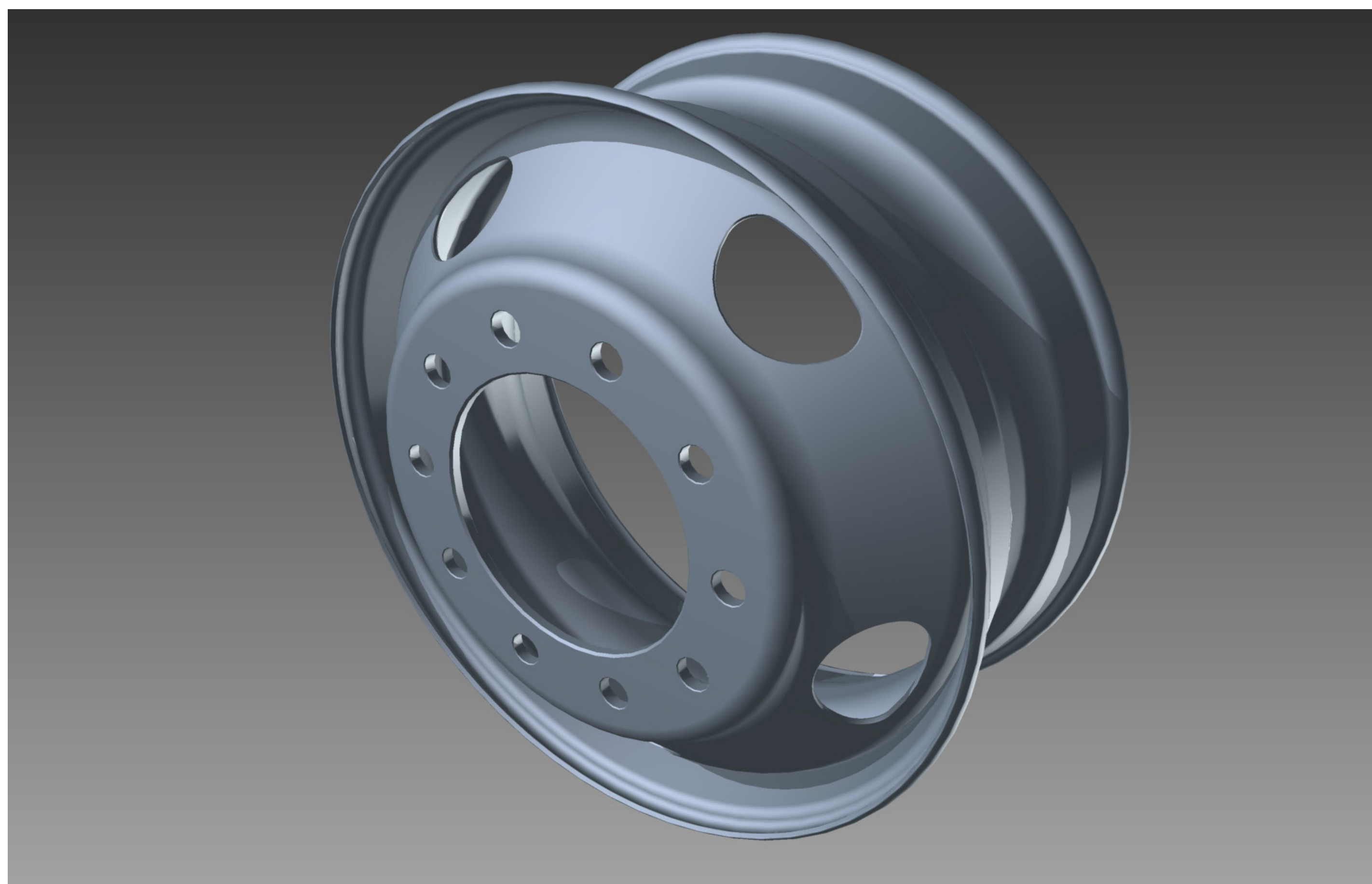


Maxion Wheels

Steel Wheels for Commercial Vehicles

Applied a new design process to its steel wheels for commercial vehicles leveraging simulation and optimization processes, achieving a 10 pound weight reduction. The design was approved on the toughest durability test in the world called Biaxial, which helps to raise standard of approval and quality of products.

- One of most important portion of steel wheel cost is raw material, so the weight reduction provided a tremendous advantage over the competition and also it brings savings for end customer due to positively impact in fuel consumption.
- Baseline in South America for a 22.5 x 8.25 wheel is 41 kg and this new design reached 36.5 kg while keeping the same level of wheel performance.



Presented in collaboration with:

