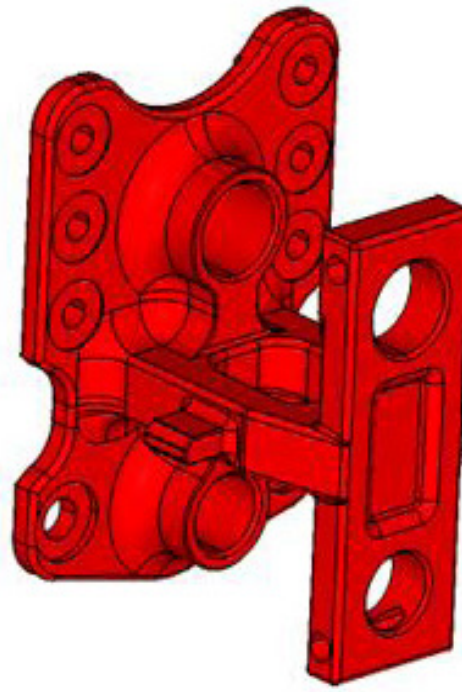
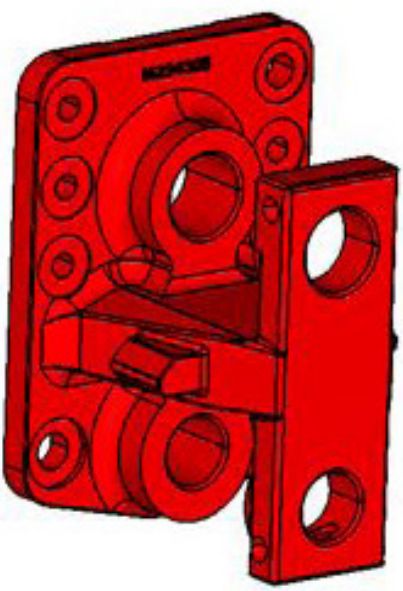


Weight Saving = $2.2 \times 4 = 8.8$ kg



Weight Saving = $3.6 \times 2 = 7.2$ kg

 **VE COMMERCIAL VEHICLES** 
A VOLVO GROUP AND EICHER MOTORS JOINT VENTURE

VE Commercial Vehicles Ltd Optimized Bell Crank Assembly

VE Commercial Vehicles Ltd. utilized solidThinking Inspire topology optimization technology to find a material efficient material layout for numerous components within its 8x2 heavy duty truck bell crank assembly. The technology assisted the team to identify where material could be removed without impacting performance. The result was a total of 16kg saved by optimizing 4 bell crank and 2 rear suspension mounting brackets.

Category:
Module

Application:
8x2 Heavy Duty Truck

Weight saving:
16kg
over 6 components

Methodology:
Design Optimization